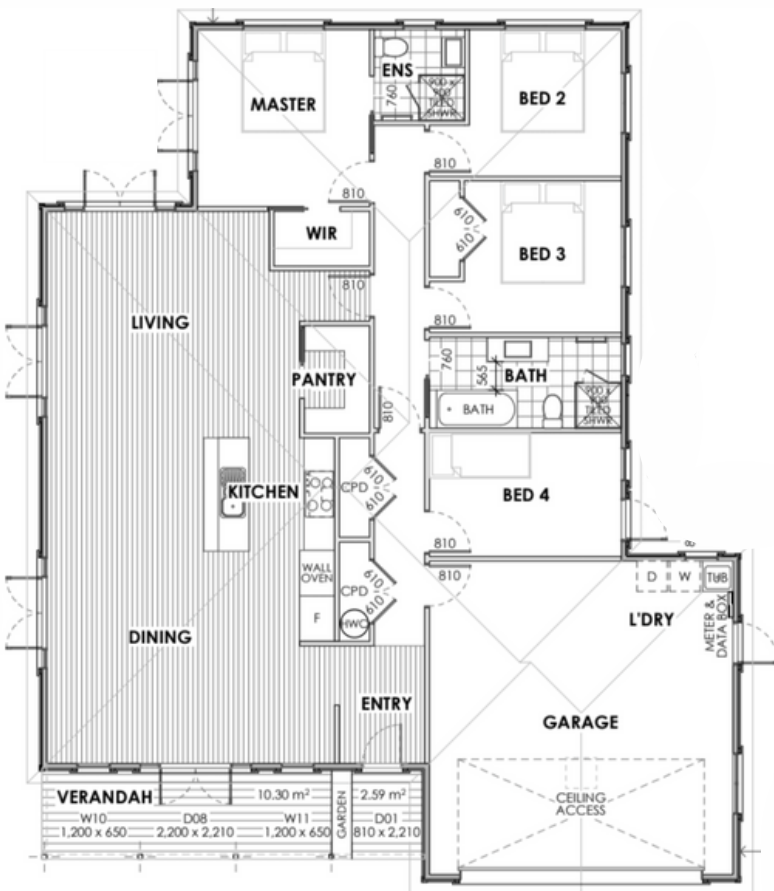


The Morrinsville Design Plan



A generous 182m² home with 14m² verandah: this home has it all - 4 bedrooms, open plan living, generous double garage, two full bathrooms, private master suite at the rear of the house, and a scullery. The 4th bedroom with external access provides a convenient work from home set up

This elegant villa is perfect for families or a couple needing some extra room when family comes to stay, this gem makes for a cosy retreat.

The front verandah provides a lovely entrance to greet your guests, or pass the time away watching the world go by. Entertaining is made easy with multiple alfresco options available off the main living area.

If you're after character and street appeal while also living in a modern layout home - look no further!





The Morrinsville Design Plan



All our designs are completely customisable so if you'd like to widen or lengthen this design, flip it sideways, or change the layout - anything is possible to suit the needs of your family or property.

We are always available to chat through the options with you.

0508 40 30 20 | info@hhomes.nz | www.heritagehomes.co.nz |

 @heritagehomesnz 


HERITAGE
~ HOMES ~